

SUMMER PROGRAM REGISTRATION

Child's Name _____

Street _____

City and Zip _____

Phone Number _____

Parents' Names _____

Child's Birthday: _____

Are you currently enrolled in our program?

Yes No

Please indicate the name of your child's
teacher in the 2009-2010 school year:

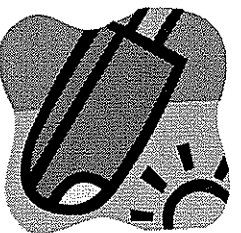
Summer Sessions

(Check all that apply)

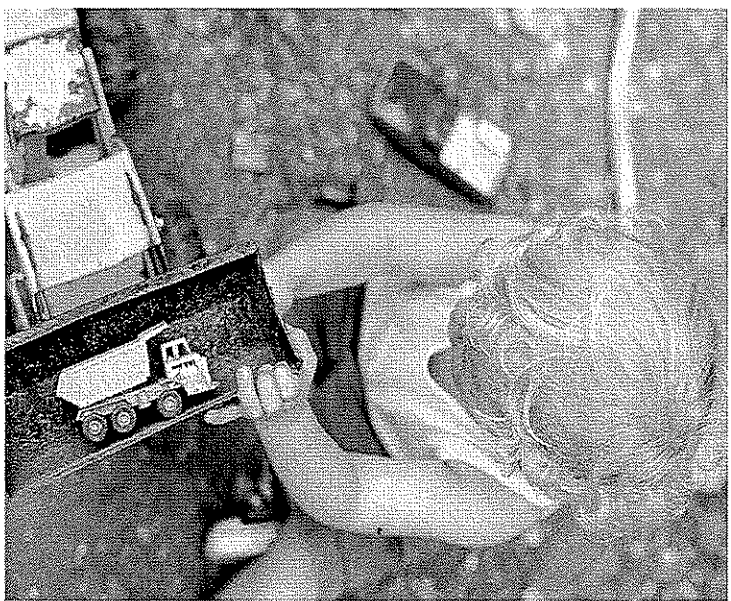
- Session 1 June 28 - July 9
- Session 2 July 12 - July 23
- Session 3 July 26 - Aug 6

Signature: _____

*Have fun at our
Summer
Program 2010*



Winter Park Presbyterian Preschool
400 S. Lakemont Avenue
Winter Park, FL 32792



**Winter Park
Presbyterian
Preschool**

SUMMER PROGRAM 2010

**Registration Begins
March 1, 2010
(407) 629-0727**

2010 SUMMER PROGRAM

ACTIVITIES

Stuffed Animal Safari

Home On the Range

Luau Celebration

Mr. Rustin's Music & Movement

Art with Mrs. Cross

Drum Music

Science Center Exploration

Computer Lab

Library Time

Story Lady

Horses on Parade

Chuck Wagon Lunch

Session 1: June 28 through July 9

WPPP on the Range

Decorate a Boot

Design Your Brand

Wanted Posters

Campfire Fun Snacks

*

Session 2: July 12 through July 23

A Day at the Zoo

Puppet Theatre Production

Animal Parade

Animal Patterns

*

Session 3: July 26 through August 6

Hawaiian Holidays

Luau

Creative Fruit Cabob

Drums, Drums, Drums

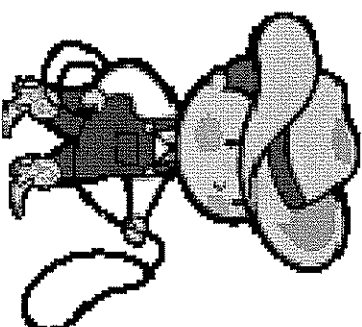
*

We now offer a new summer camp program for kindergarten through second graders. See our separate brochure for details.

PROGRAM

Each session consists of two weeks—Monday through Friday, from 9:00 to 1:00 and costs \$230.00 or \$23 per day for children two and under who may choose to attend fewer days. A non-refundable deposit of \$60 per session toward tuition is due at the time of registration. Tuition is due in full by May 28, 2010. No discounts are offered for the summer sessions.

Extended day is available from 1:00 to 2:30 for \$5.00 or 3:30 for \$10.00.



Friday, Aug. 20, 2010

Meet Your Teacher

Monday, Aug. 23, 2010

Fall Session Begins!